

HAWAIIAN HOME LANDS

HAWAIIAN HOMES COMMISSION • DEPARTMENT OF HAWAIIAN HOME LANDS

# Budget Briefing

Biennium Budget FY26 & FY27

State Legislative Session 2025

DEPARTMENT OF HAWAIIAN HOME LANDS



# ACT 279 STATUS



ACT 279	LOTS
\$600M	6,030*
Encumbered Pre-Jun2024	Lapse Fix Post-Jun2024
\$471M (18 projects)	\$129M (10 projects)

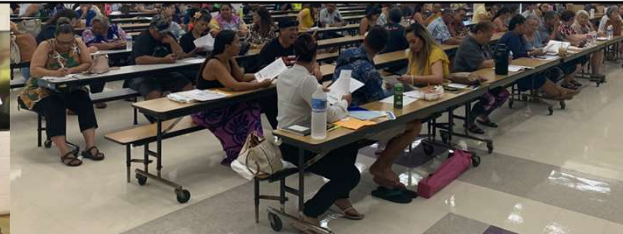
*\*For projects where no immediate action will be taken, funds will be reallocated, subject to Hawaiian Home Commission approval, to initiatives with greater urgency, either due to project readiness or unforeseen cost increases.*

*\*Awarding over 2,100 leases in 2025. Construction has started at La'i 'Ōpua, Pu'uhona, and Kauluokaha'i and the first house in these developments are projected to be occupied at the end of the year.*



## BIENNIUM BUDGET REQUEST

COUNTY	FY2026	FY2027	LOTS
Hawaii	\$160.21M	\$14M	830
Kauai	\$75.65M	\$60M	302
Maui	\$54M	\$0M	296
Honolulu	\$13M	\$60M	330
Statewide	\$65M	\$17M	75



DEPARTMENT OF HAWAIIAN HOME LANDS



# HAWAI'I COUNTY: La'i 'Ōpua



## TOTAL PROJECT COST

\$120M

580

## ACT279

\$39.2M

- Appropriation used for partial onsite infrastructure & for off-site infrastructure (water system development)

## REQUEST

\$28M

## LOTS

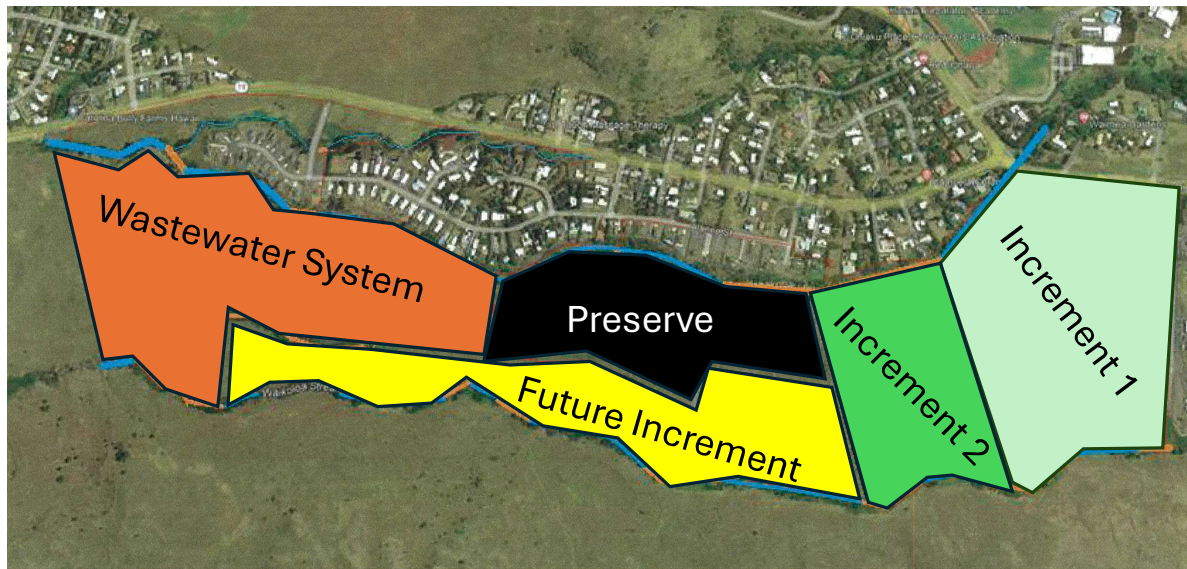
200

- Additional monies required to complete infrastructure





# HAWAI'I COUNTY: Lālāmilo



## TOTAL PROJECT COST

\$51M	283
-------	-----

- Anticipated cost for future increment to develop 132 lots is \$17M.

## REQUEST

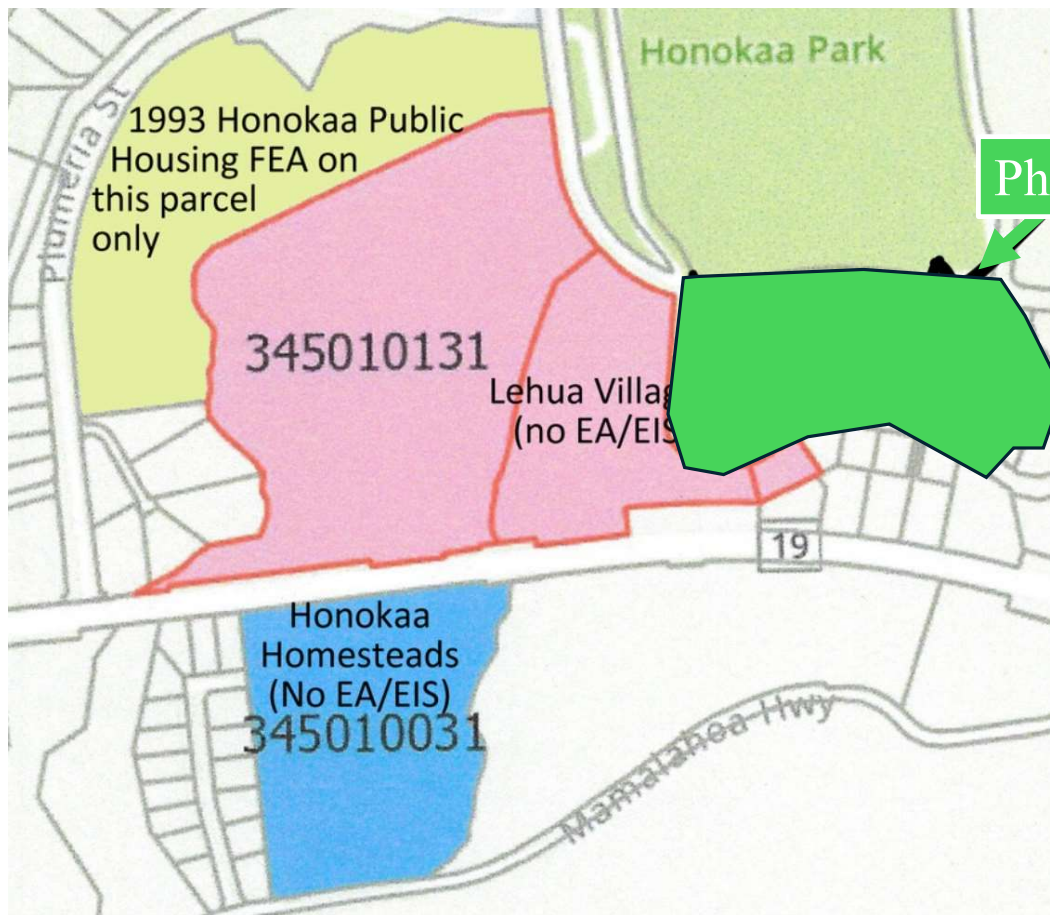
\$34M	151
-------	-----

## LOTS

- To complete partial infrastructure on Increment No. 1 (80 lots)
- To complete infrastructure on Increment No. 2 (71 lots)
- To complete wastewater system



# HAWAI'I COUNTY: Honoka'a



## TOTAL PROJECT COST

\$49.3M

296

## ACT279

\$10M

*\*Appropriation used for acquisition & preliminary studies*

## REQUEST

\$10M

## LOTS

71

*\*onsite infrastructure & offsite infrastructure*



# HAWAI'I COUNTY: Honomū Phase 2



## TOTAL PROJECT COST

\$25M

66

*\*We completed 16 lots in Phase 1, therefore providing a total development of 66 sub-ag lots at a cost of \$25M.*

## REQUEST

\$18.7M

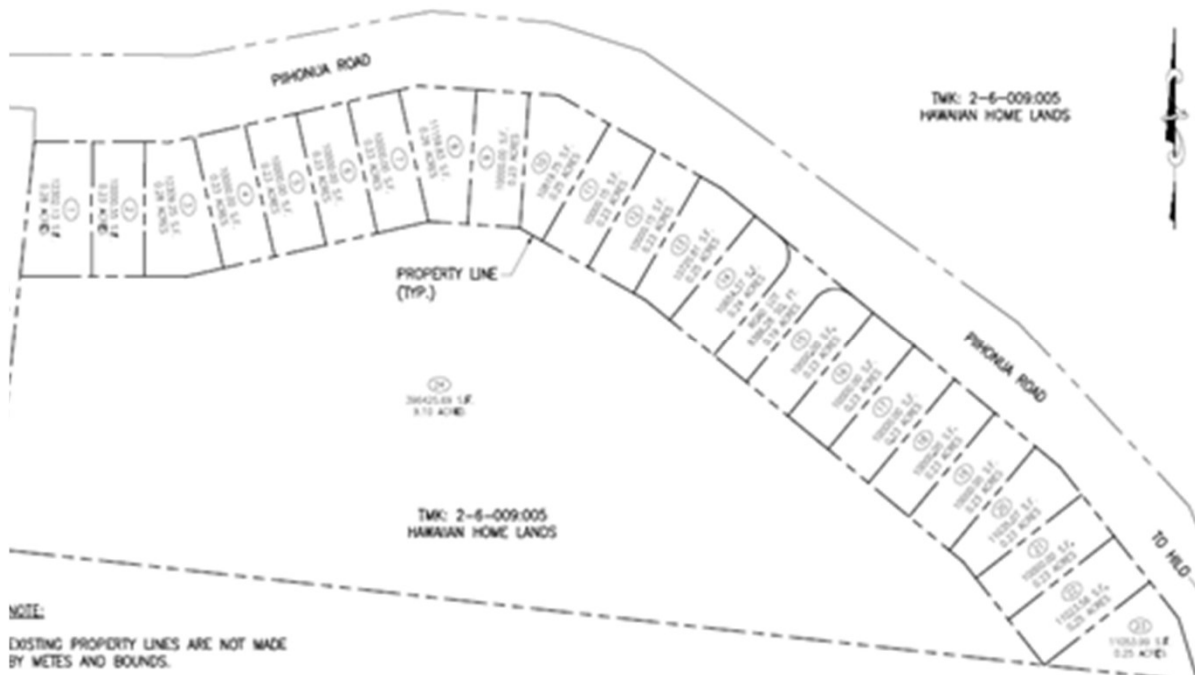
## LOTS

50

*\*To prepare sub-ag lots, paving of internal roads, and constructing street lights.*



# HAWAI'I COUNTY: Pi'ihonua



## TOTAL PROJECT COST

\$7M

48

## REQUEST

\$7M

## LOTS

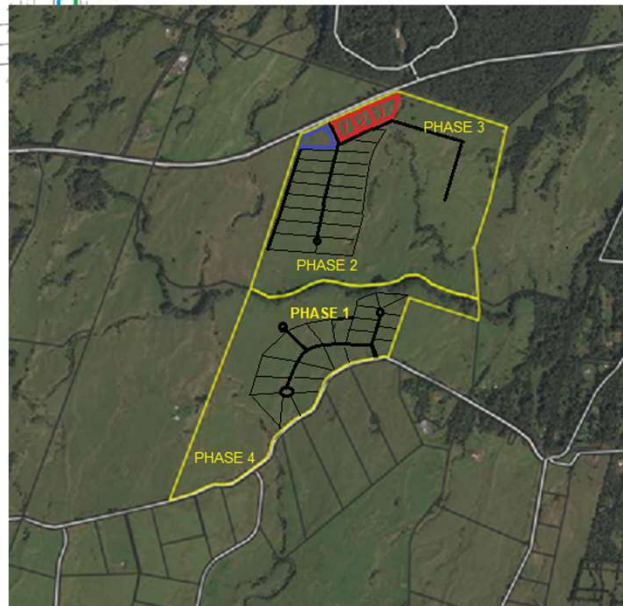
48

*\*Will be used to fully develop 48 lots within the Pi'ihonua-Kaumana Region.*





# HAWAI'I COUNTY: Keaukaha & Pana'ewa



## TOTAL PROJECT COST

\$1.51M

10

## REQUEST

\$1.51M

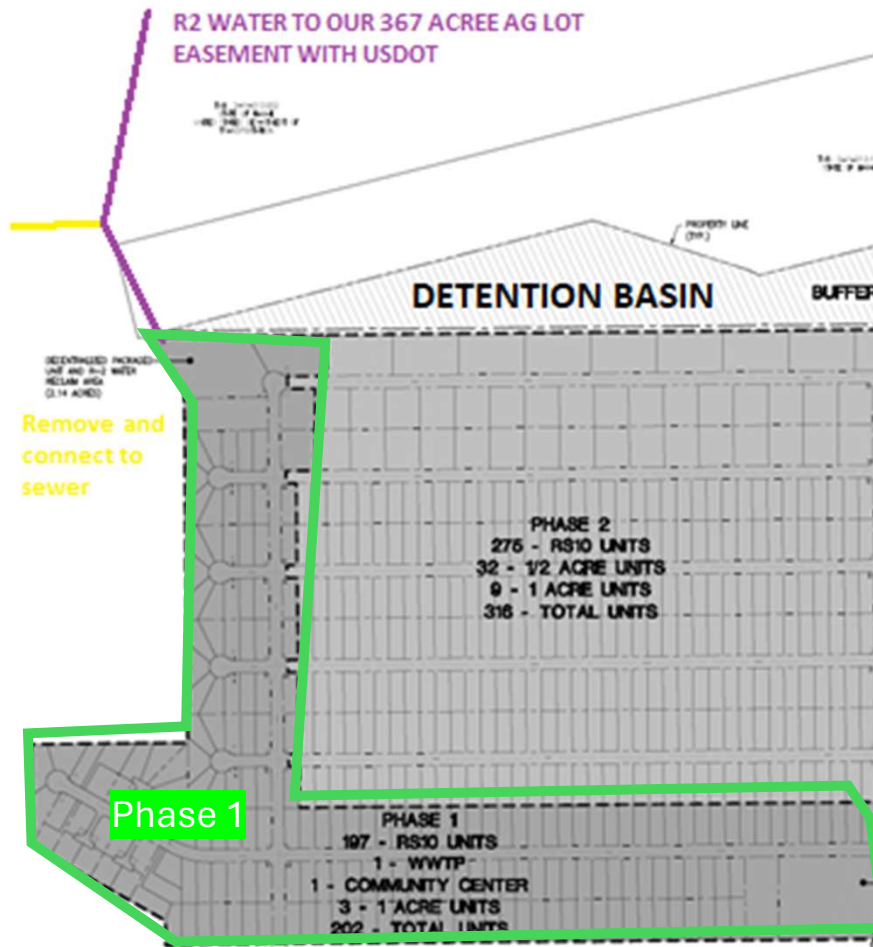
## LOTS

10

*\*Will be used to subdivide larger lots to double the count.*



# HAWAI'I COUNTY: Panaewa Elama Road



## TOTAL PROJECT COST

\$140M

600

## ACT279

\$1M

## LOTS

n/a

*\*Appropriation used for preliminary studies*  
*\*Additional NAHASDA funding also used for more studies*

## REQUEST

\$75M

## LOTS

300

*\*To develop the Phase 1 Project*

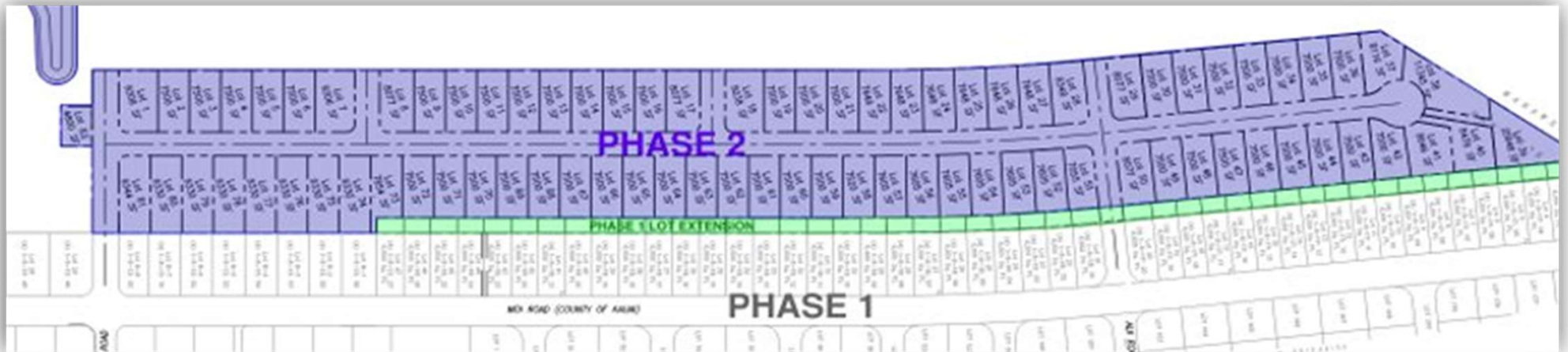


# KAUAI COUNTY: Hanapēpē Phase 2

TOTAL PROJECT COST		ACT279	REQUEST	LOTS
\$33.45M	82	\$17.8M	\$15.65M	52

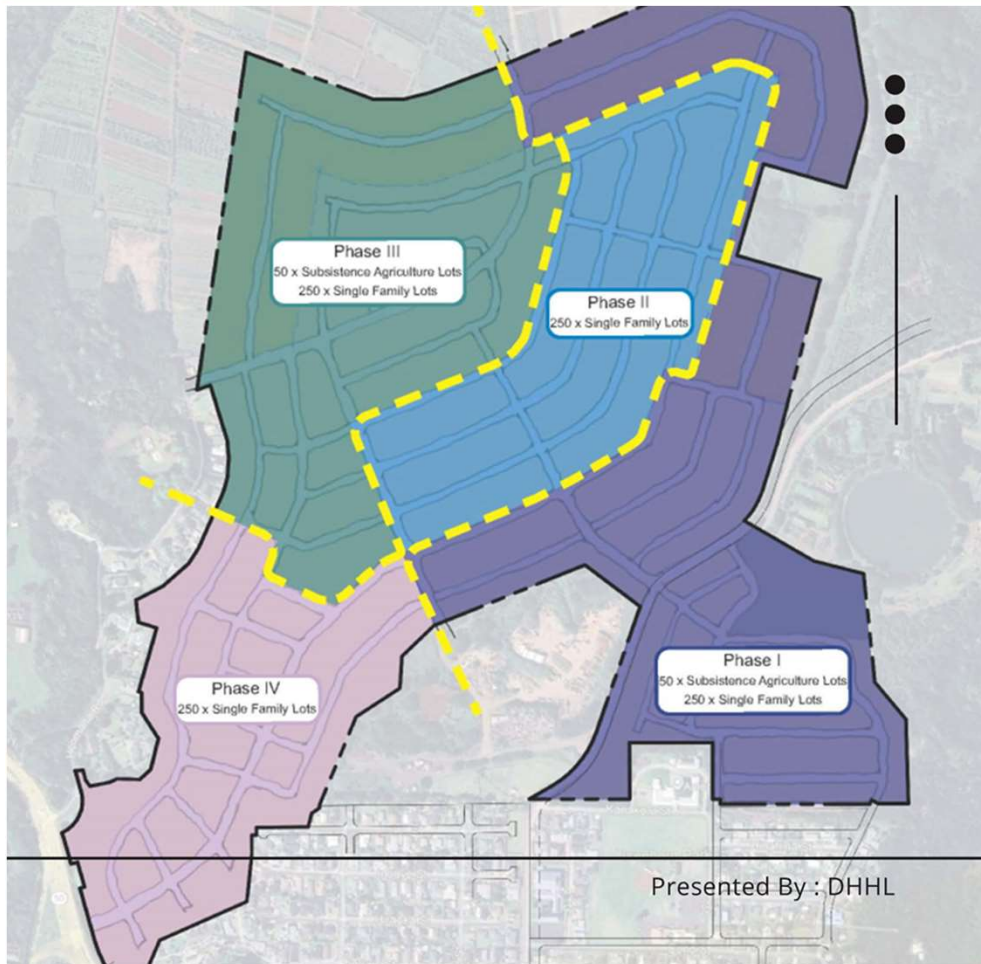
*\*For preliminary reports*

*\*To complete the full development of Phase 2*





# KAUAI COUNTY: Līhu'e



## TOTAL PROJECT COST

\$250M

1,100

## ACT279

\$22.6M

*\*For acquisition & preliminary reports*

## REQUEST

\$120M

## LOTS

250

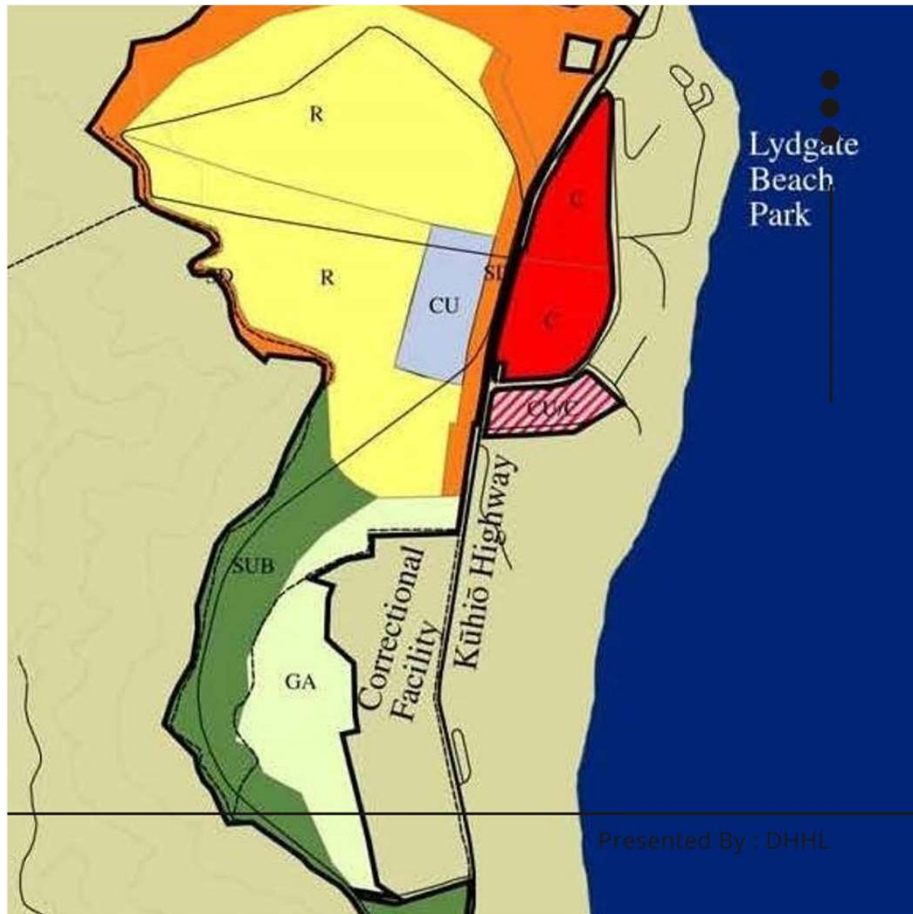
*\*\$96M for offsite infrastructure (wastewater, water, and roadway improvements)*

*\*\$24M for on-site infrastructure for Phase 1*





# KAUAI COUNTY: Wailua



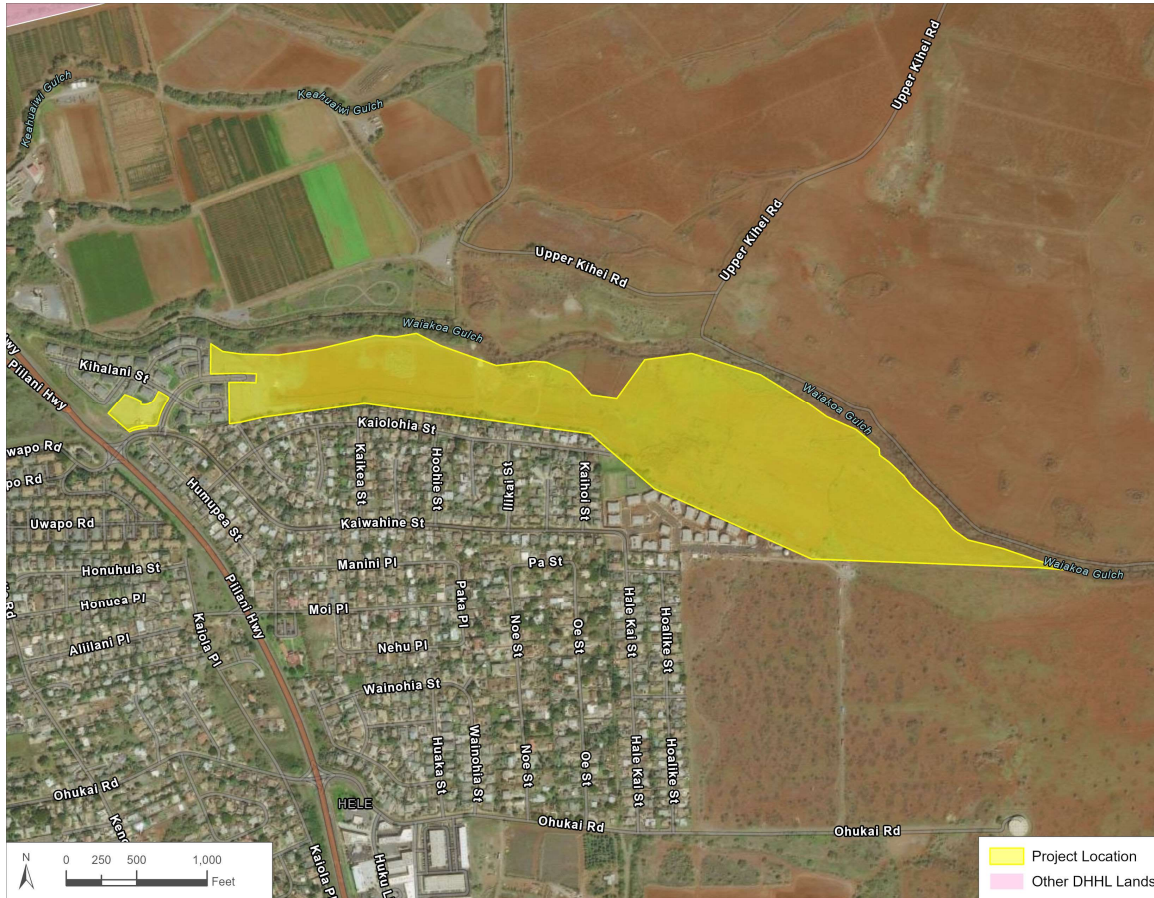
## REQUEST

**\$1M**

*\*Projected expense to design these lots for sub-ag (1 to 2 acres lots)*



# MAUI COUNTY: Kamalani



**ACT279**

**\$45.6M**

*\*Appropriation used for acquisition, preliminary reports, offsite infrastructure, and onsite infrastructure for Phase 1.*

**REQUEST**

**\$40M**

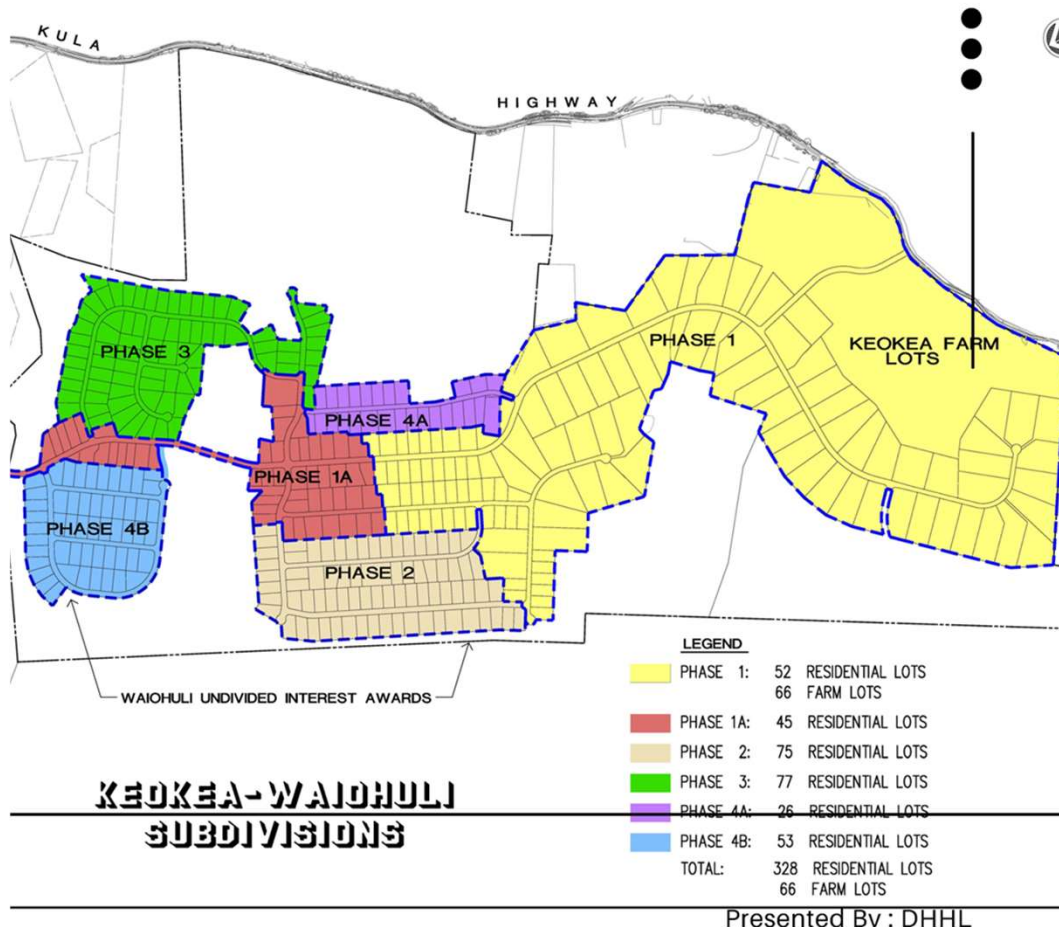
**LOTS**

**250**

*\*Request for onsite infrastructure for remaining 250 lots.*



# MAUI COUNTY: Keokea-Waiohuli Phase 2



## TOTAL PROJECT COST

\$20M

75

## REQUEST

\$14M

## LOTS

46

*\*For well construction (\$7.5M) and Development of Phase 2 (\$6.5M)*





# CITY & COUNTY OF HONOLULU: Ka'uluokaha'i



## ACT279

\$140M

*\*Appropriation used for preliminary reports, infrastructure of IIC, and the backbone of the entire development.*

## REQUEST

\$68M

## LOTS

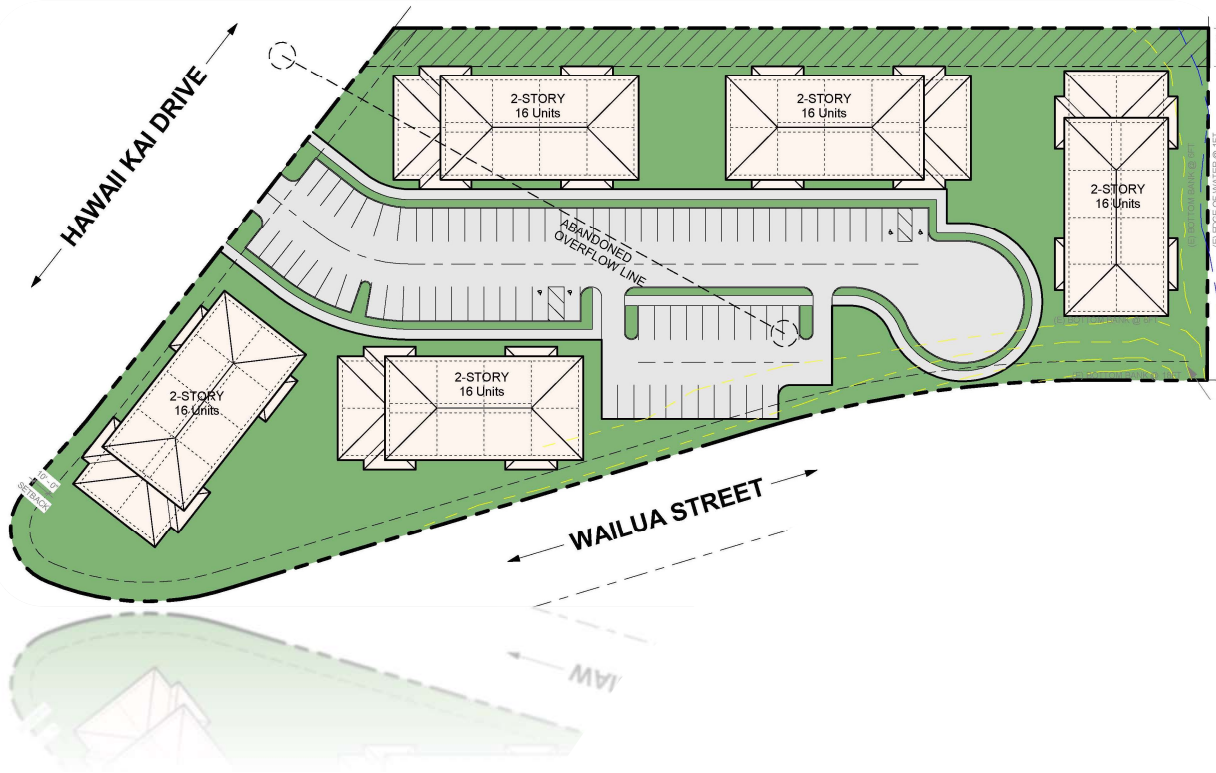
250

*\*Projected cost to build out 250 lots at IID*





# CITY & COUNTY OF HONOLULU: Marina 10A



**ACT279**

**\$2.5M**

*\*For acquisition & preliminary reports*

**REQUEST**

**\$5M**



**STATEWIDE: FY2026 - \$65M    FY2027 - \$17M**

## **Engineering Studies**

**\$23M**

## **Awards Program**

**\$5M**

## **Individual Assistance**

**\$9M**



## **Development Project Financing**

**\$25M**

## **Scattered Lots Development Program**

**\$20M**



DEPARTMENT OF HAWAIIAN HOME LANDS



## PURPOSE 4 – REPAIRS & MAINTENANCE



- Sewer Improvements
- Roadway Improvements (Guardrails & Traffic Calming)
- Drainage Improvements
- Vegetation Management



# MAHALO



DEPARTMENT OF HAWAIIAN HOME LANDS

[www.dhhl.hawaii.gov](http://www.dhhl.hawaii.gov)

DEPARTMENT OF HAWAIIAN HOME LANDS